



NIGEL FUDGE

exp[®] UK

@ nigel.fudge@exp.uk.com

🌐 nigelfudge.exp.uk.com

📞 07595 898 050

Loves Hill Court, South Road, Timsbury, BA2 0ER

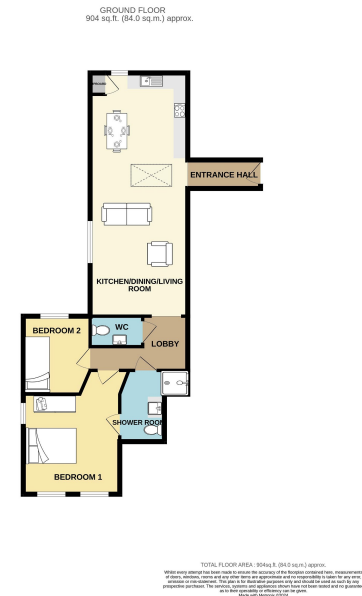
Guide Price £300,000

🛏️ 2 🚿 1 🚗 1



- A Beautifully Appointed Apartment with Lift Access
- A full range of fitted appliances.
- Two Bedrooms
- Allocated Parking Space.
- Pets allowed
- Open plan Kitchen/dining/ living area of 8.66 metres with exposed wooden beams
- Shower room and a separate Cloakroom
- Quiet position with views of the road into the village
- Communal Areas include a library, Spa Room, gardens and guest suite
- No onward Chain and Vacant Possession





Welcome to Apartment 10 at Loves Hill Court, a stunning first-floor residence in a bespoke luxury development exclusively for active retirees aged 55 and above. This beautifully designed apartment boasts a spacious layout, featuring an open-plan kitchen, dining, and living area with a vaulted ceiling and exposed beams, creating a rustic charm. The high-end kitchen is equipped with granite countertops and a full range of integral appliances. Additionally, the apartment offers two bedrooms, a Jack and Jill style shower room, and a convenient WC in the rear lobby. With lift access, the property is perfect for those seeking a lock-up-and-leave lifestyle, allowing for easy living and the freedom to travel. An allocated parking space is provided for your convenience.

Energy Efficiency Rating		
	Current	Potential
Very energy efficient - lower running costs		
(92 plus) A		
(81-91) B		
(69-80) C		
(55-68) D		
(39-54) E	50	50
(21-38) F		
(1-20) G		
Not energy efficient - higher running costs		
England & Wales	EU Directive 2002/91/EC	